

Monthly Economic Data Summary Regions Footprint

October 2020

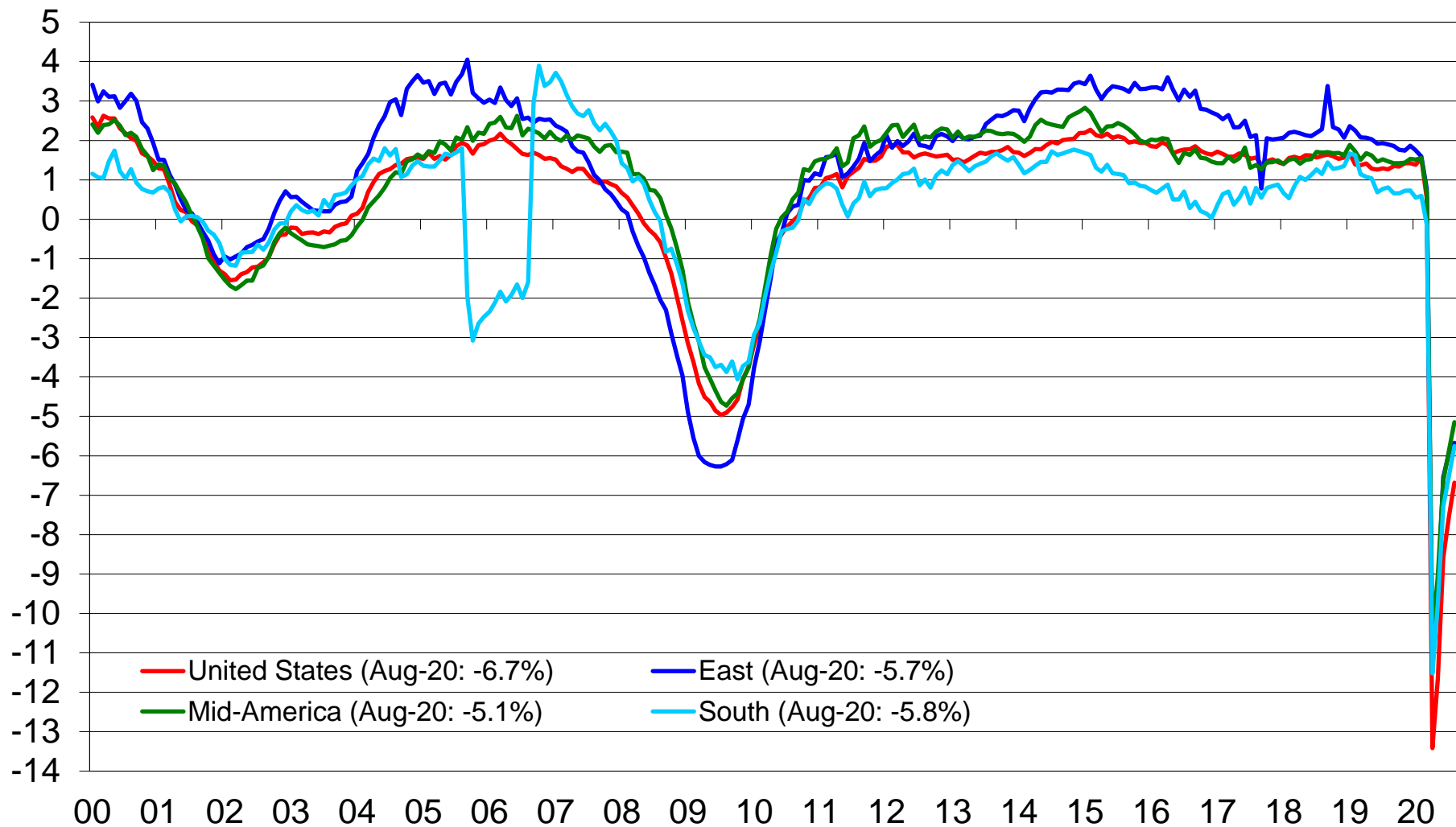
Regions Bank Economics Division

Richard F. Moody
Chief Economist

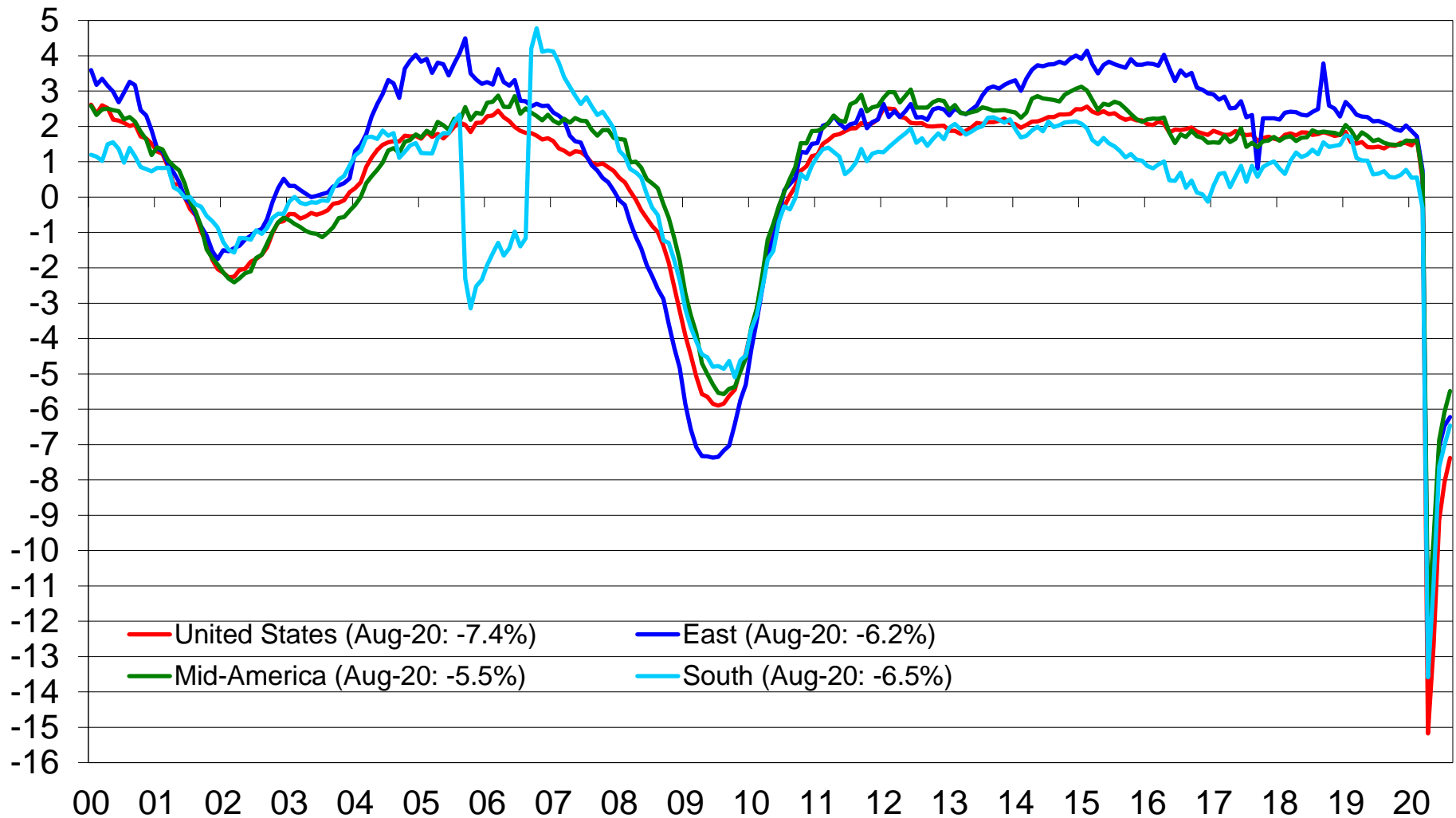
Greg McAtee
Senior Economist



Total Nonfarm Employment % change year ago

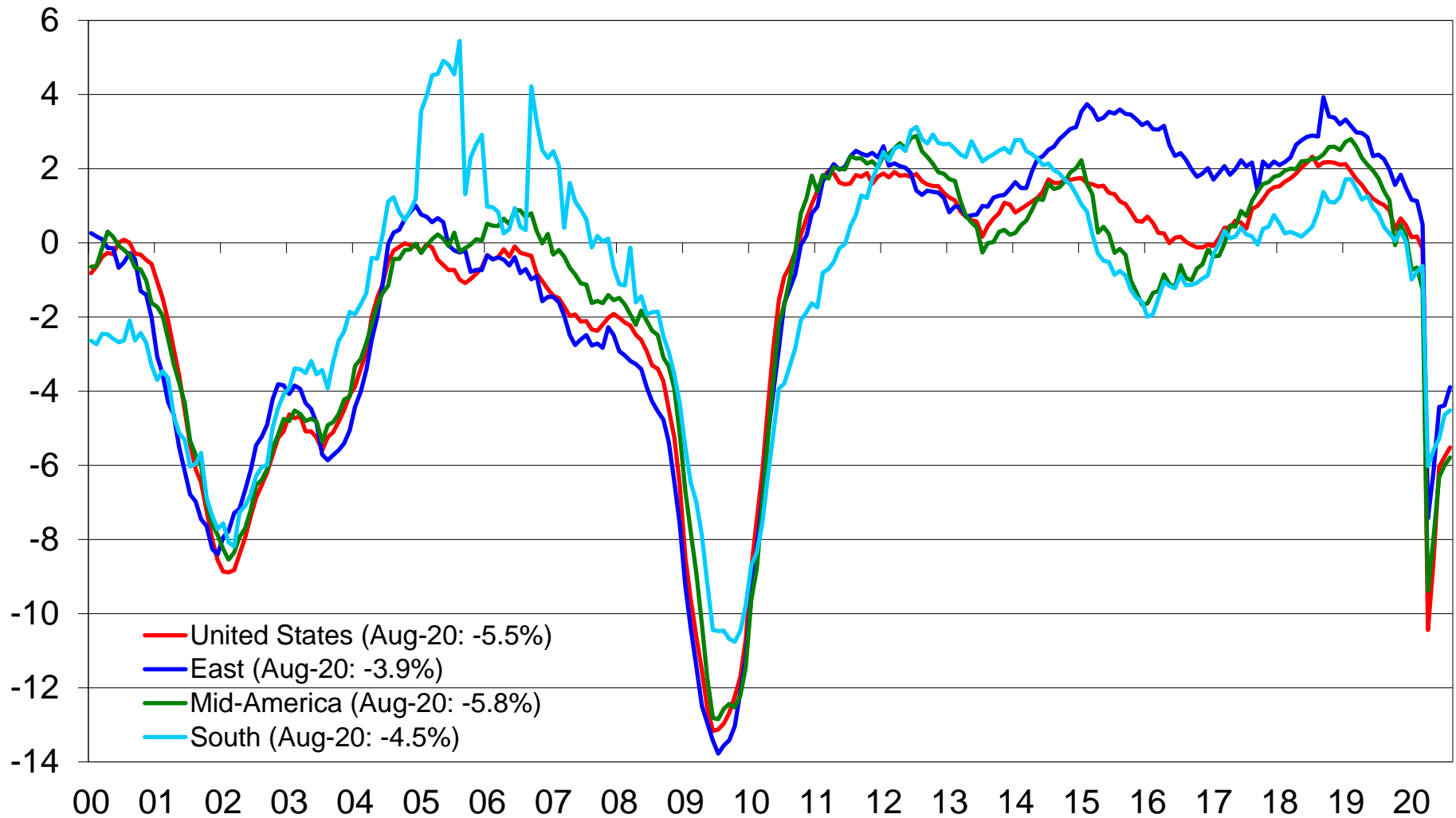


Total Private Sector Employment % change year ago



Sources: U.S. Bureau of Labor Statistics; Moody's Analytics; Regions Bank Economics Division

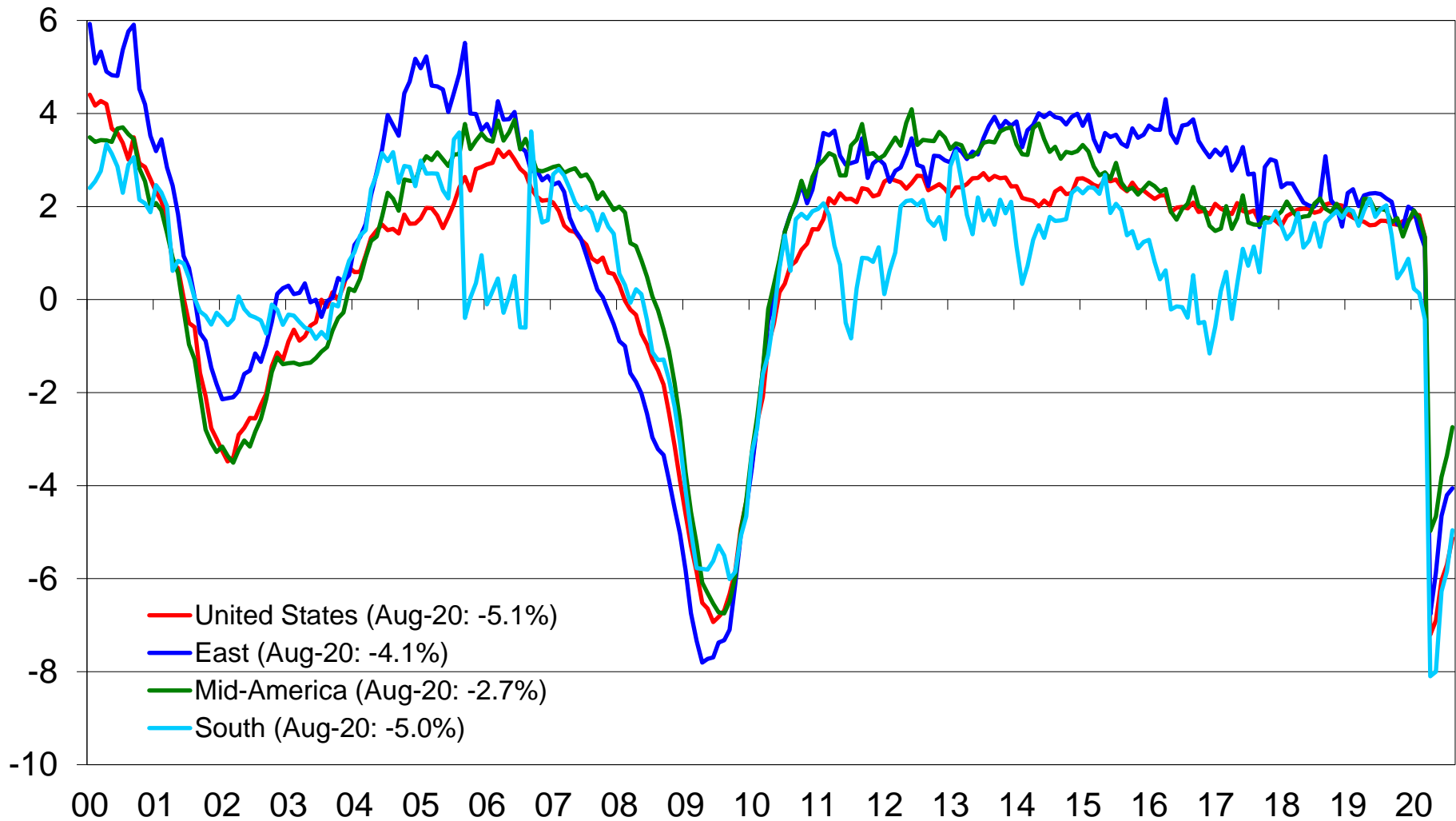
Manufacturing Employment % change year ago



Sources: U.S. Bureau of Labor Statistics; Moody's Analytics; Regions Bank Economics Division

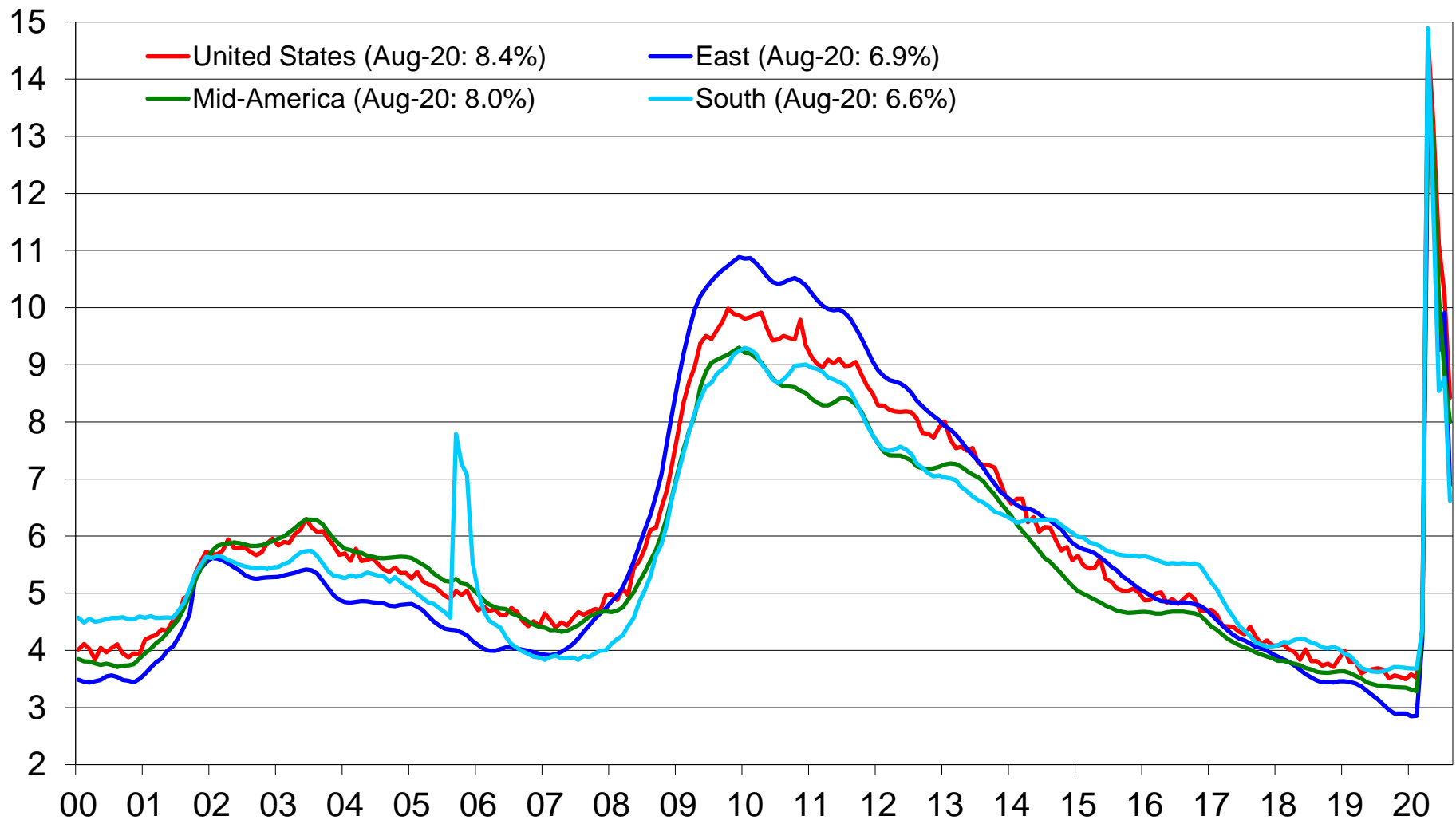
Office-Based Employment

% change year ago



Sources: U.S. Bureau of Labor Statistics; Moody's Analytics; Regions Bank Economics Division

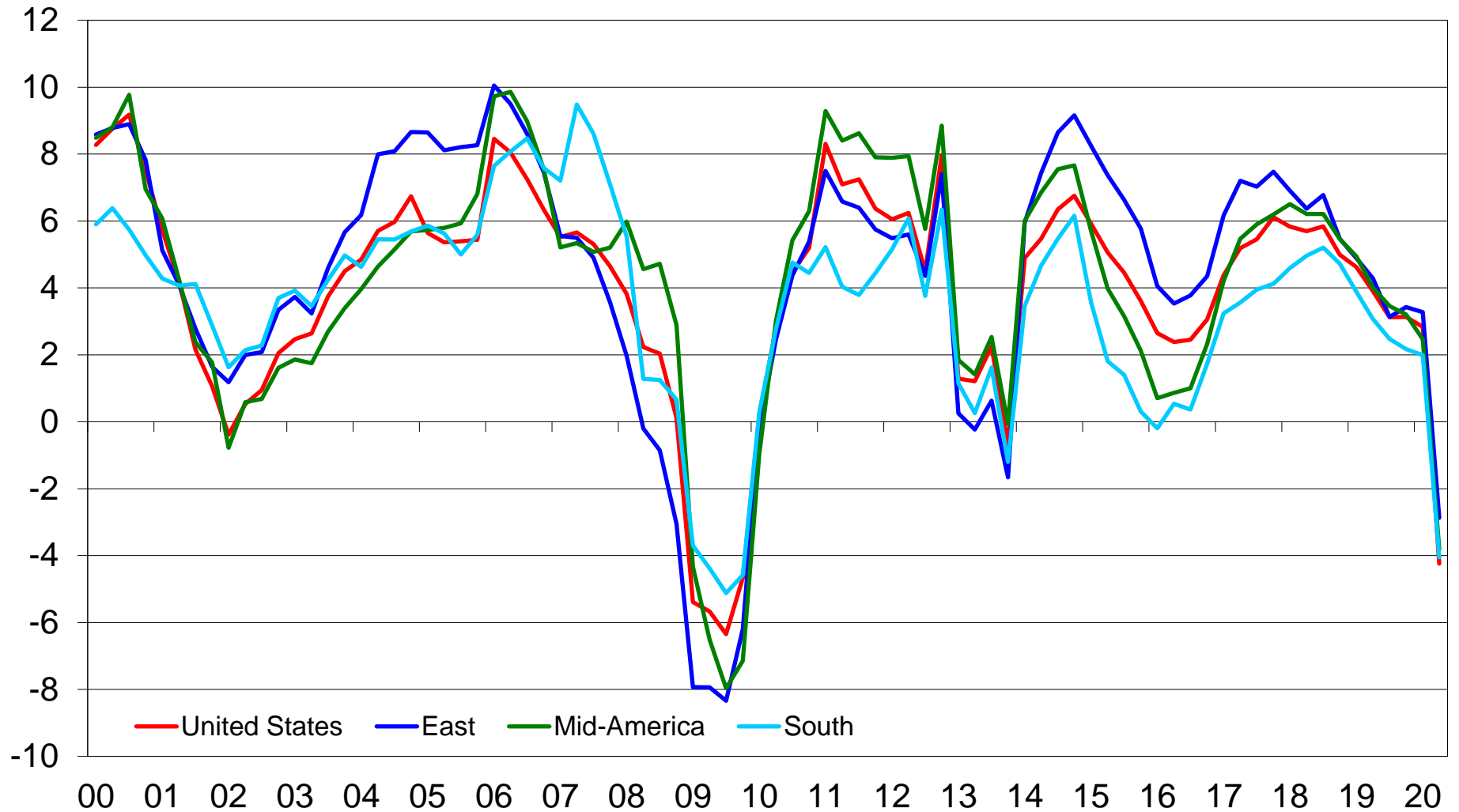
Unemployment Rate, %



Sources: U.S. Bureau of Labor Statistics; Moody's Analytics; Regions Bank Economics Division

Personal Income Excluding Transfer Payments

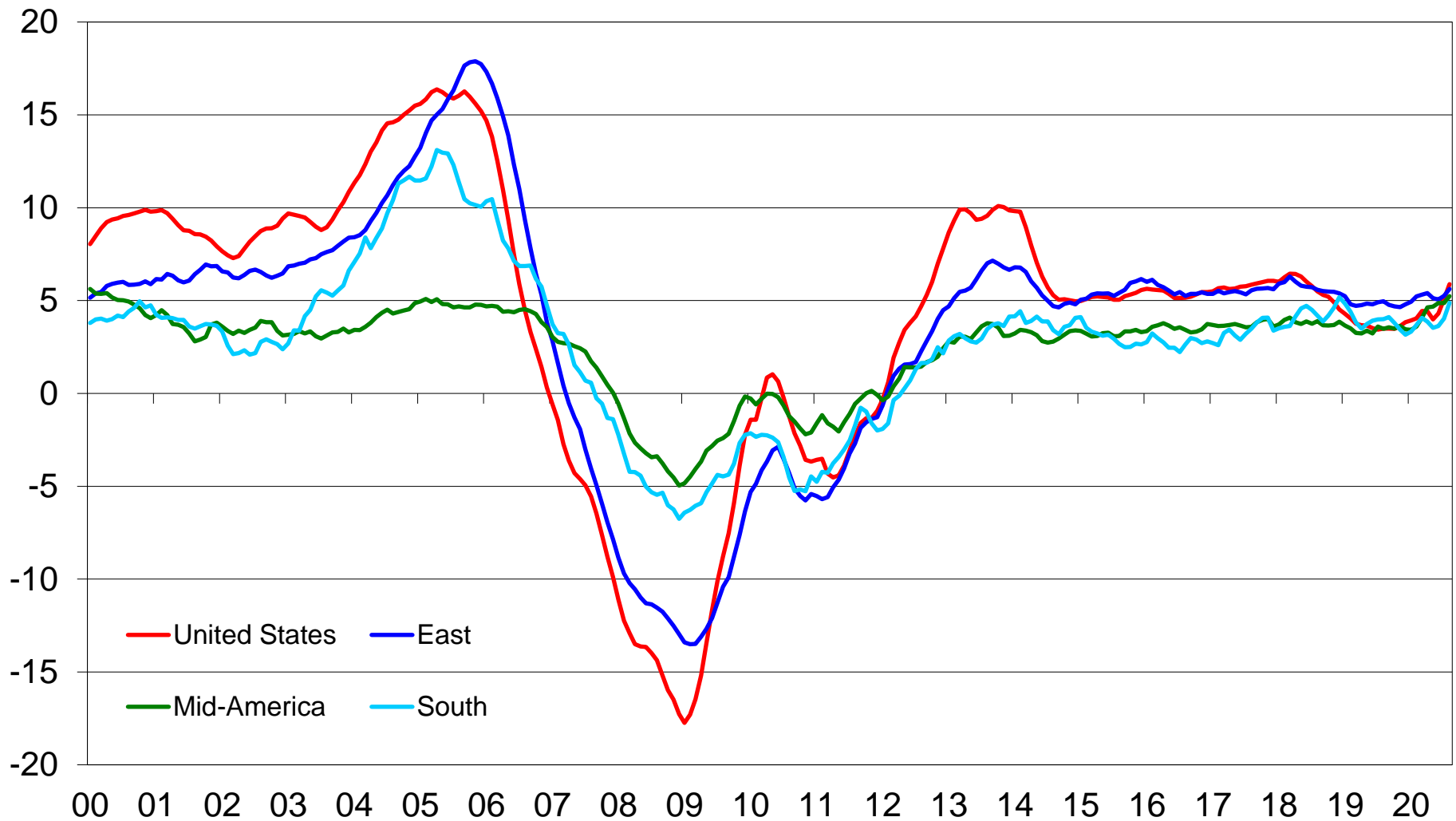
% change year ago



Sources: U.S. Bureau of Economic Analysis; Moody's Analytics; Regions Bank Economics Division

CoreLogic House Price Index

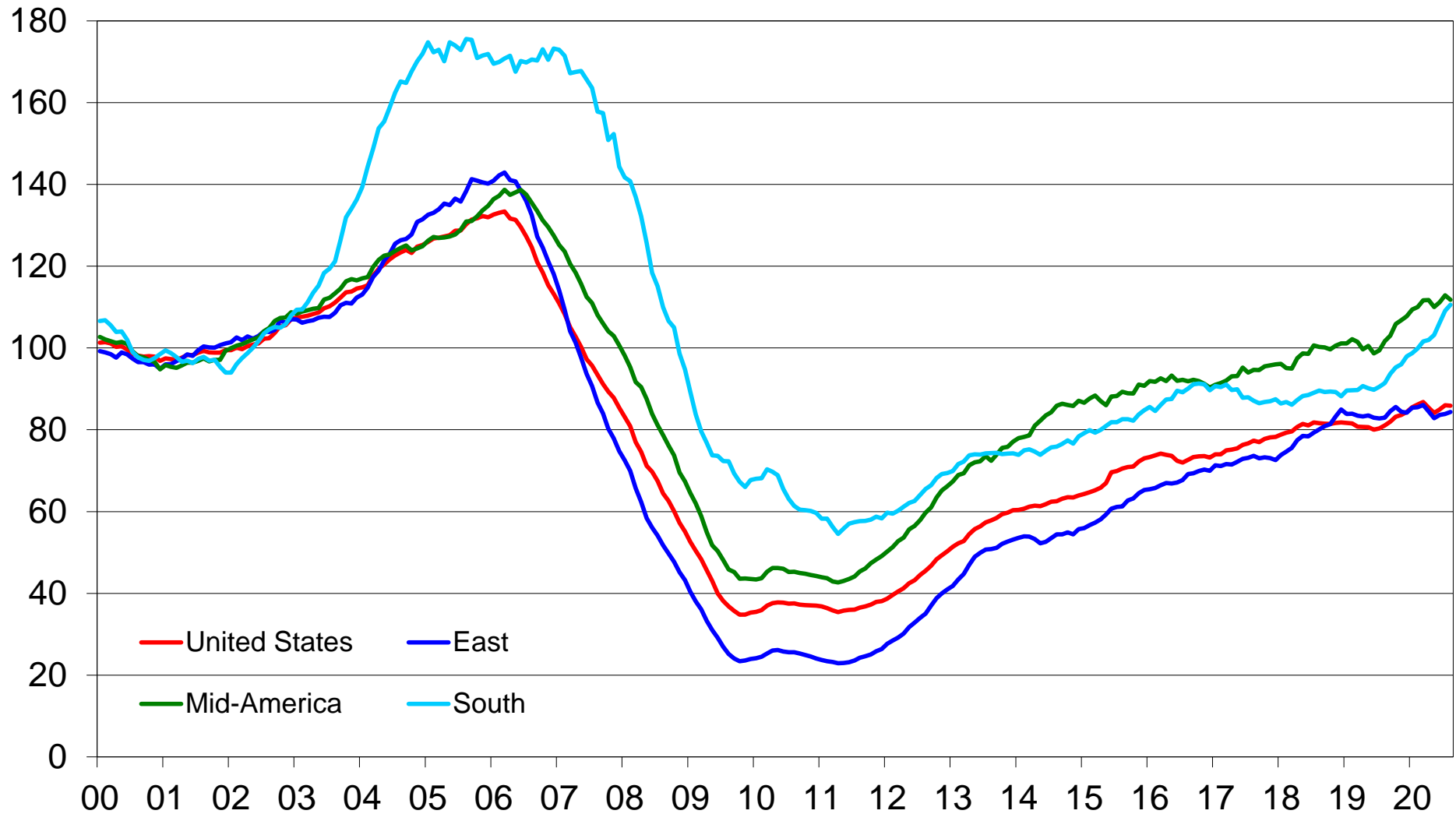
% change year ago



Sources: CoreLogic; Regions Bank Economics Division

Total Housing Permits

12-mo moving sum, relative to average rate between Jan 2000 and Dec 2002



Sources: U.S. Census Bureau; Regions Bank Economics Division