

Regions Retail Lockbox

Image Viewer User Guide



Retail Lockbox Image Viewer

Regions Commercial Banking—A Complete Solution

Service Overview

Regions Retail Lockbox Imaging Services has developed an enhanced Image Viewer to provide you with improved navigation to store and access images of your remittance checks and documents. The CD / DVD you receive contains a date range of captured images based on your specifications.

How It Works

As payment remittances are processed, a black and white image of the check and remittance document is captured and subsequently archived for your convenience. Regions Retail Lockbox Image Viewer will give you the ability to archive images indefinitely. The CD has the capacity to retain approximately 35,000 images and data associated with them; while the DVD has the capacity to retain approximately 225,000 images and data.

How You Benefit

Quick retrieval: Simply enter the desired search criteria from the coupon or check and your images are just a mouse click away.

Easy-to-read images: Remittance coupons and checks appear in black and white, so the images are easy to read. You can even use on-screen tools to rotate and zoom in/out to examine images closely.

Easy setup: There is no special software to install or maintain, so getting started is easy.

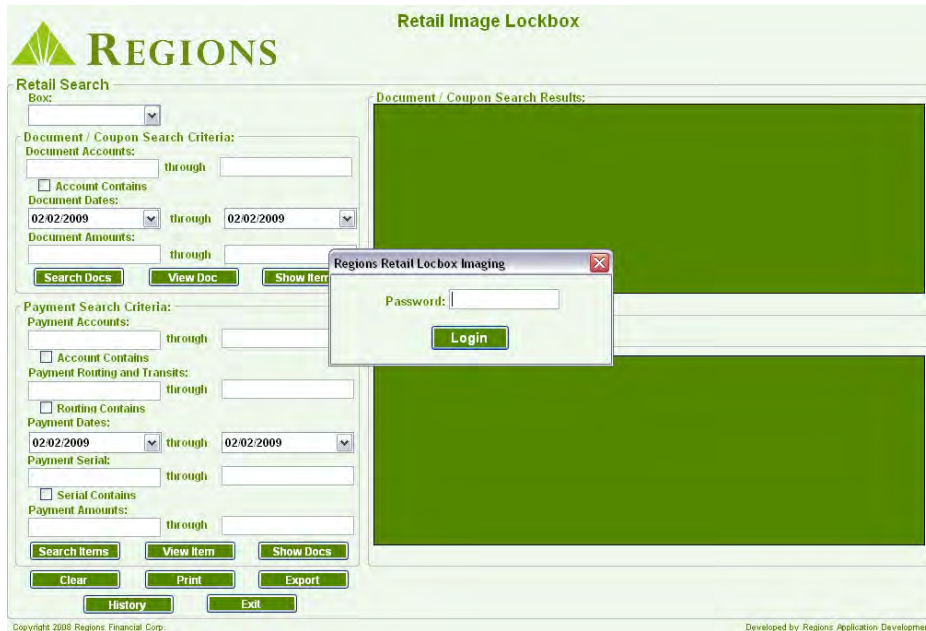
Enhanced security: Security features have been integrated into the Retail Lockbox Image Viewer to help safeguard your confidential information. The CD / DVDs are encrypted and password protected.

Retail Lockbox Image Viewer

Getting Started

Place the CD / DVD into your CD drive or DVD drive. The Retail Image Viewer may load automatically. If it does not, perform the following steps:

1. Click the **My Computer** icon on your desktop. The **My Computer** window opens. Alternatively, you can open Windows Explorer from the **Start** menu or right-click the **Start** button and click **Explore**.
2. Double-click on the CD / DVD drive or open Windows Explorer from the Start button, double-click on the CD / DVD drive, and double-click on the file StdRetailViewer.exe.
3. The system requires the **.net** version 2.0 to view images. If you do not have this program, it has been provided on this CD / DVD. To install:
 - open **My Computer**
 - double-click on the CD / DVD drive or open **Windows Explorer** from the **Start** button
 - double-click on the CD / DVD drive
 - double-click on the file **dotnetfx** (follow your normal install procedures)
4. Log in to the system. Enter the password provided to you by Regions and click **Login** (or press the return key).

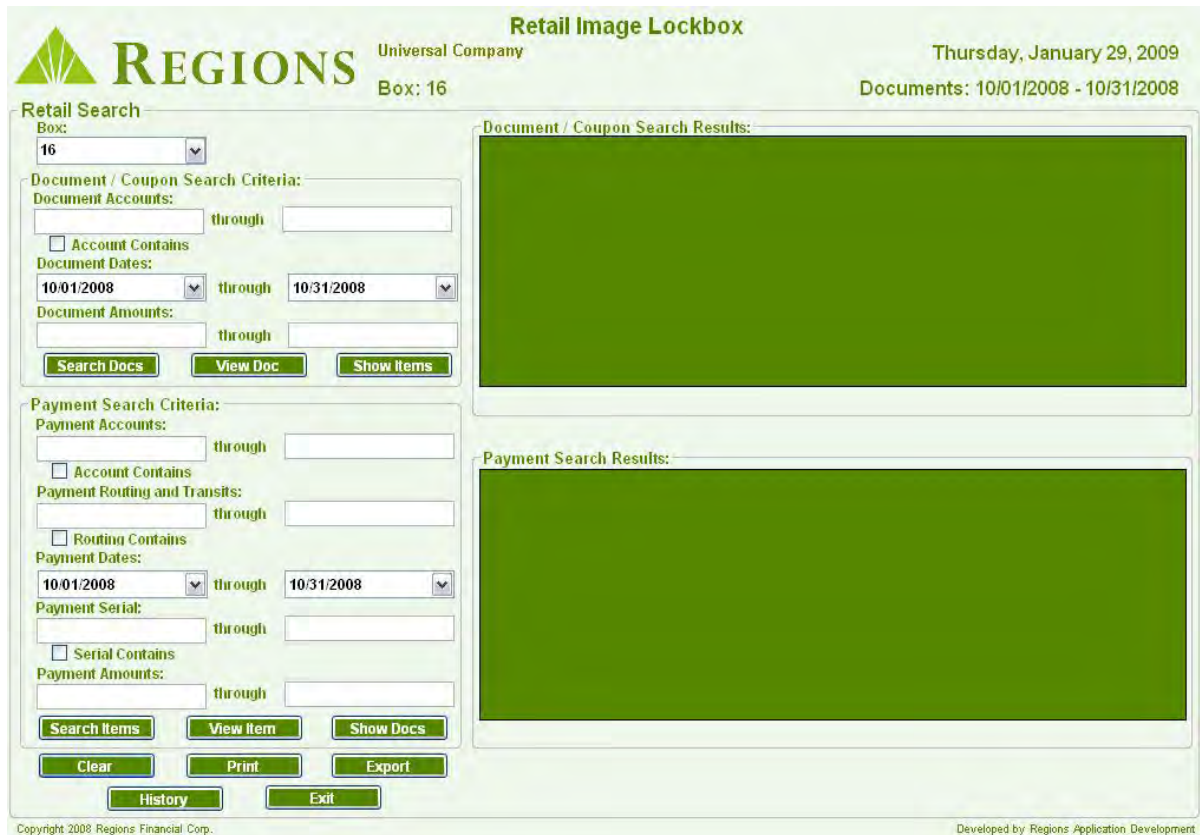


Note: Remember to restrict password information to authorized individuals.

Using the Search Feature

The **Retail Search** screen is the first screen you will see after you log in. Use this search screen to find images from the disk archive by remittance document using the fields in the **Document / Coupon Search Criteria** section, or by check using the fields in the **Payment Search Criteria** section.

Searches can be conducted using specific criteria from documents such as **document account numbers, document dates, and document amounts**, as well as data specific to payments such as **payment routing and transit numbers, payment serial numbers, and payment amounts**. The more fields you populate, the more targeted your search results will be.



Retail Image Lockbox
 Universal Company
 Thursday, January 29, 2009
 Box: 16
 Documents: 10/01/2008 - 10/31/2008

Retail Search
 Box: 16

Document / Coupon Search Criteria:
 Document Accounts: [] through []
 Account Contains
 Document Dates: 10/01/2008 through 10/31/2008
 Document Amounts: [] through []
 [Search Docs] [View Doc] [Show Items]

Payment Search Criteria:
 Payment Accounts: [] through []
 Account Contains
 Payment Routing and Transits: [] through []
 Routing Contains
 Payment Dates: 10/01/2008 through 10/31/2008
 Payment Serial: [] through []
 Serial Contains
 Payment Amounts: [] through []
 [Search Items] [View Item] [Show Docs]

[Clear] [Print] [Export]
 [History] [Exit]

Document / Coupon Search Results:
 []

Payment Search Results:
 []

Copyright 2008 Regions Financial Corp. Developed by Regions Application Development

Searching for Items

1. To conduct a search using **document / coupon data**, type the desired search criteria in the **Document / Coupon Search Criteria** fields:
 - **Document Accounts:** You can search for one specific account or a range of accounts. To search using a partial document account number, enter the data in the first field, then check the **Account Contains** box before running your search (Note: The disk only contains images for dates based on your specifications).
 - **Document Dates:** The default date search will display all document images contained on the disk. You can narrow your range by selecting a specific date range using the calendar.
 - **Document Amount Range:** Enter a specific dollar amount or a range of amounts to be displayed.
 - Once you have entered your search criteria, click **Search Docs**. A list of transaction information matching your search criteria appears in the **Document / Coupon Search Results** window.
 - Highlight the document/coupon you wish to view and click **View Doc**.
2. To conduct a search using **payment (check) data**, enter the desired search criteria in the **Payment Search Criteria** fields:
 - **Payment Accounts:** You can search for one specific checking account number or a range of account numbers. To search using a partial checking account number, enter the data in the first field, then check the **Account Contains** box before running your search (Note: The disk only contains images for dates based on your specifications).
 - **Payment Routing and Transit:** Enter a specific routing and transit number or a range of routing and transit numbers. To search using a partial number, enter the data in the first field, then check the **Routing Contains** box before running your search.
 - **Payment Dates:** The default date search will display all check images contained on the CD / DVD. You can narrow your range by selecting a specific date range using the calendar.
 - **Payment Serial:** Search for a specific check serial number or range of check serial numbers. To search using a partial serial number, enter the data in the first field, then check the **Serial Contains** box before running your search.
 - **Payment Amounts:** Enter a specific payment amount or a range of payment amounts.
 - Once you have entered your search criteria, click **Search Items**. A list of transaction information matching your search criteria appears in the **Payment Search Results** window.
 - Highlight the payment you wish to view and click **View Item**.
3. Clicking on the **Show Items** or **Show Docs** buttons, you will see a listing of the corresponding documents in both Results windows.

In the following example, a search was conducted using a partial Document Account Number:

- 300 was typed in the Document Accounts field
- The date range was narrowed in the Document Dates field
- View Doc was selected

Retail Image Lockbox

Universal Company Thursday, January 29, 2009
Box: 16 Documents: 10/01/2008 - 10/31/2008

Retail Search

Box: 16

Document / Coupon Search Criteria:

Document Accounts: 300

Account Contains

Document Dates: 10/01/2008 through 10/03/2008

Document Amounts: through

Payment Search Criteria:

Payment Accounts: through

Account Contains

Payment Routing and Transits: through

Routing Contains

Payment Dates: 10/01/2008 through 10/31/2008

Payment Serial: through

Serial Contains

Payment Amounts: through

Document / Coupon Search Results:

Box	Account	Date	Amount
16	3001237564	10/01/2008	\$310.80
16	030012225897	10/03/2008	\$84.56

2 documents found for this search.

Payment Search Results:

Box	Account	Routing	Date	Serial	Amount
16	1237564	11900571	10/01/2008	55861	\$310.80
16	1221540912215	21101108	10/03/2008	22158	\$84.56

2 items found for this search.

Notice that both document account numbers displayed in the Document / Coupon Search Results window contains a variation of the search data (300). From the results windows, you can now retrieve an image of the items by clicking on an item, and then clicking either the **View Doc** or **View Items**.

Document / Coupon Search Results:

Box	Account	Date	Amount
16	3001237564	10/01/2008	\$310.80
16	030012225897	10/03/2008	\$84.56

2 documents found for this search.

Payment Search Results:

Box	Account	Routing	Date	Serial	Amount
16	1237564	11900571	10/01/2008	55861	\$310.80
16	1221540912215	21101108	10/03/2008	22158	\$84.56

The View Document Screen

This screen shows the document / coupon and check image you have selected to view. In addition to the document image, you also see document and check data specific to the transaction, including the **Check Routing and Transit Number, Account Number, Serial Number, Amount, Sequence Number** and the **Document Account Number, Amount, and Sequence Number**. You are also provided navigation tools on the **Image Toolbar**.



The Image Toolbar (located at the top right of the window) displays print and image viewing options to make it easier to view the check and document image. The available tools are:



Print Image(s)



Magnify/De-magnify



Display Image at 100%



Reset Image



Rotate Image



Previous/Next Image



Toggle between Document/Coupon and payment Search Windows



Exit - Return to Search Window

Printing Images

From the **View** or **Search** screens, click the **Print** icon (Located at the bottom of the Search screen and on the Toolbar on the View Document screen).

Print Options

Print Options allows you to select how you would like to print items stored on the disk. The options are:

1. **Print:** Choose **Selected Items** or **All Items in Set**
2. **Scope Options:** Select to print the Document and Payments, Documents Only, or Payments Only.
3. **Images Per Page:** The options are two images per page and four images per page.
4. Once your print criteria is selected, you may **Print, Print Preview, or Print to a PDF file format.**




Exporting Document / Payment Images

From the **View** or **Search** screen, click the **Export** icon (Located at the bottom of the Search screen).

Exporting Options

Export Options allow you the ability to export transaction data and images from the disk. The options are:

1. **Export: Single Item** or **All Items in Set**.
2. **Scope Options: Both, Documents Only, and Payments Only** (Use this option when Single Item is selected).
3. **Output Format:** The output file formats are **CSV, XML, and Image Only**.
4. **Image Options:** Select to export data **With** images or **Without** images.
5. Once you have set your export options, click the **Continue** button to export the data.



The screenshot shows a dialog box titled "Export Options" with a close button (X) in the top right corner. The dialog is divided into three main sections: "Export", "Scope Options", "Output Format", and "Image Options".

- Export:** Contains two radio buttons: "Single Item" (selected) and "All Items in Set".
- Scope Options:** Contains two radio buttons: "Document" and "Payment" (selected).
- Output Format:** Contains three radio buttons: "CSV" (selected), "XML", and "Image Only".
- Image Options:** Contains two radio buttons: "With" (selected) and "Without".

At the bottom of the dialog, there are two buttons: "Continue" and "Cancel".

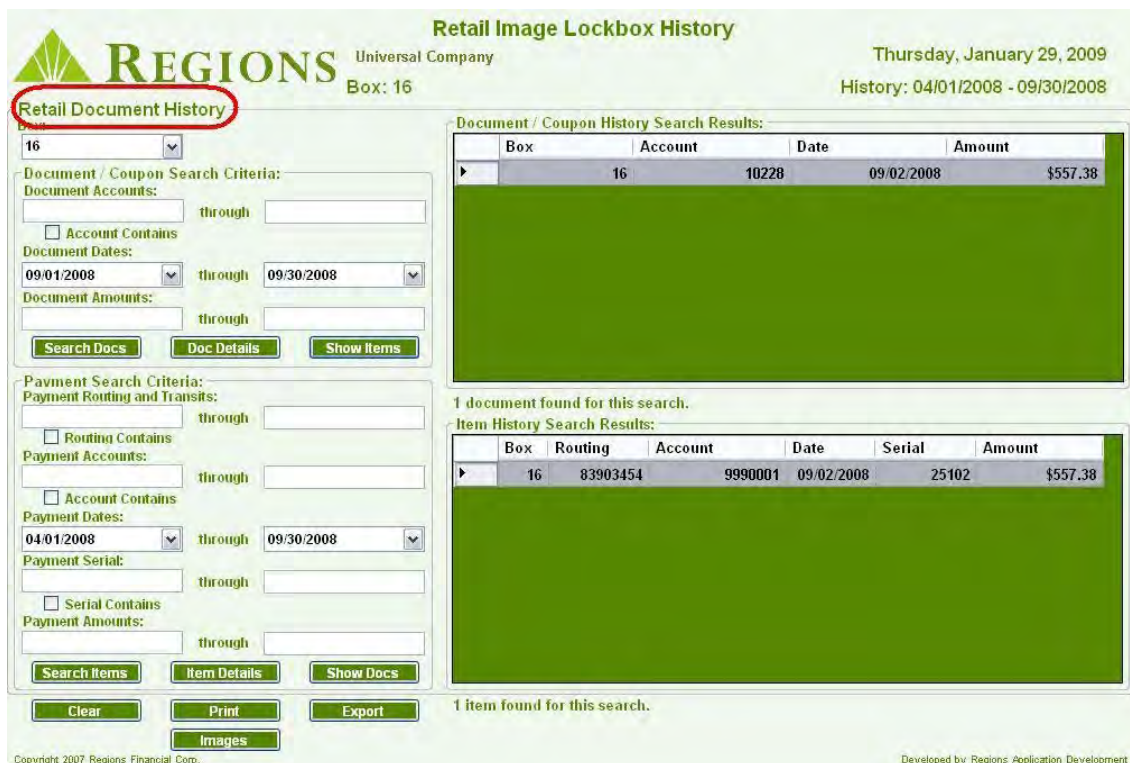
Historical Image Reference

In addition to the transaction date and images contained on each disk you receive, a historical reference to previous images and transactions is included on the disk. This allows you to locate items captured to a previous CD/DVD.

When you click on the **History** button at the bottom of the **Retail Search** window, **Retail Document History** will display in a separate window.

To use this function:

1. Complete the fields of the **Document / Coupon Search Criteria** or **Payment Search Criteria**.
2. Click the **Search Docs** or **Search Items** buttons (based on your search criteria).
3. After setting your Search Criteria and clicking the Search button, information about the transaction will appear in the respective Results windows as shown below.
4. The History screen also has **Print** and **Export** capabilities similar to the Search screen. However, no image data is available.
5. Clicking the **Images** button at the bottom of the window allows you to return to the **Search** window.



Retail Image Lockbox History
 Universal Company
 Thursday, January 29, 2009
 Box: 16
 History: 04/01/2008 - 09/30/2008

Retail Document History

Document / Coupon History Search Results:

Box	Account	Date	Amount
16	10228	09/02/2008	\$557.38

1 document found for this search.

Item History Search Results:

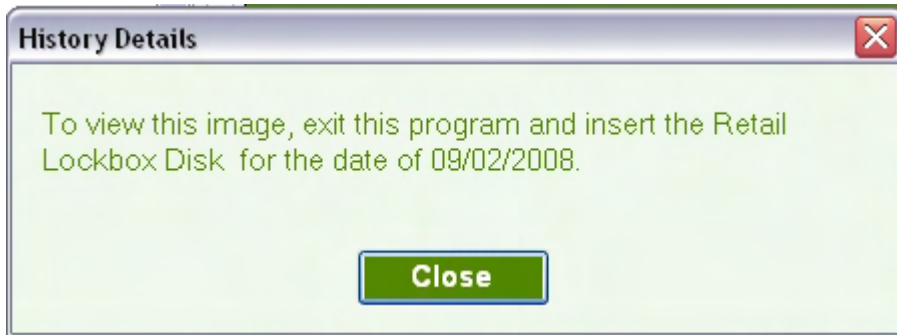
Box	Routing	Account	Date	Serial	Amount
16	83903454	9990001	09/02/2008	25102	\$557.38

1 item found for this search.

Copyright 2007 Regions Financial Corp. Developed by: Regions Application Development

Note: Due to the large volume of items that can be stored on a disk, narrowing your search criteria will greatly reduce the amount of time necessary to conduct a History search.

6. After you have located your search item, click the **Doc Details** or **Item Details Button**. You will be directed to insert the applicable disk that contains an image of the item.



Frequently Asked Questions (FAQs)

I am prompted to input a Password when attempting to log in.

Because of Regions' attention to protecting the security of your account information, the CD / DVDs are password encrypted. This ensures that only authorized individuals will have access to view images and transaction information related to your account, and to the account information of your payment remitters. A password was mailed to you in a previous communication. To obtain a new password, contact Regions Commercial Client Services at 1-800-787-3905.

My queries display “No documents found for this search” or “No items found for this search”. How do I locate the transactions?

Try using a broader search to look for the transaction, e.g. a greater dollar amount spread, greater date paid date range, or greater check range.

How can I clear data I've entered on the Search window so that I can initiate a new search?

To initiate a new search, click the Clear button at the bottom of the Search window. This will restore the fields to the defaults.

What is the purpose of the icons on the toolbar?

By moving your cursor arrow over each button, without clicking, a brief identifier will define the function of that tool. By clicking on the tool's icon, you enable that tool's function until the icon is clicked again to deactivate.

What is the purpose of History button?

History allows you to determine where an image previously sent to you on a CD/DVD resides. When you enter historical transaction information, you will be prompted to insert the specific disk that contains the transaction information and image.

I need additional assistance for a problem that isn't addressed here. Who can I ask?

Email Regions Commercial Client Services at clientservicesgroup@regions.com or call Regions Commercial Client Services at 1-800-787-3905.



This guide is for general informational and reference purposes only and is entirely subject and subordinate to the terms of the respective written agreements for the products and services described above. This guide does not constitute a contract or representation or warranty of any kind, express or implied, nor does it in any way supplement, replace, modify, or amend the terms and provisions of the written agreements that govern the products and services. You should review actual product and service agreements carefully to understand the terms that govern the products and services and the rights, responsibilities, and liabilities of parties thereunder.

