

# **Initial Claims For Unemployment Insurance State Level Data Through May 2017 Regions Footprint**

Regions Bank Economics Division  
Richard F. Moody, Chief Economist  
Greg McAtee, Senior Economist



## Initial Claims For Unemployment Insurance (monthly total, seasonally adjusted)

Alabama



Arkansas



Source: Bureau of Labor Statistics; Regions Economics Division

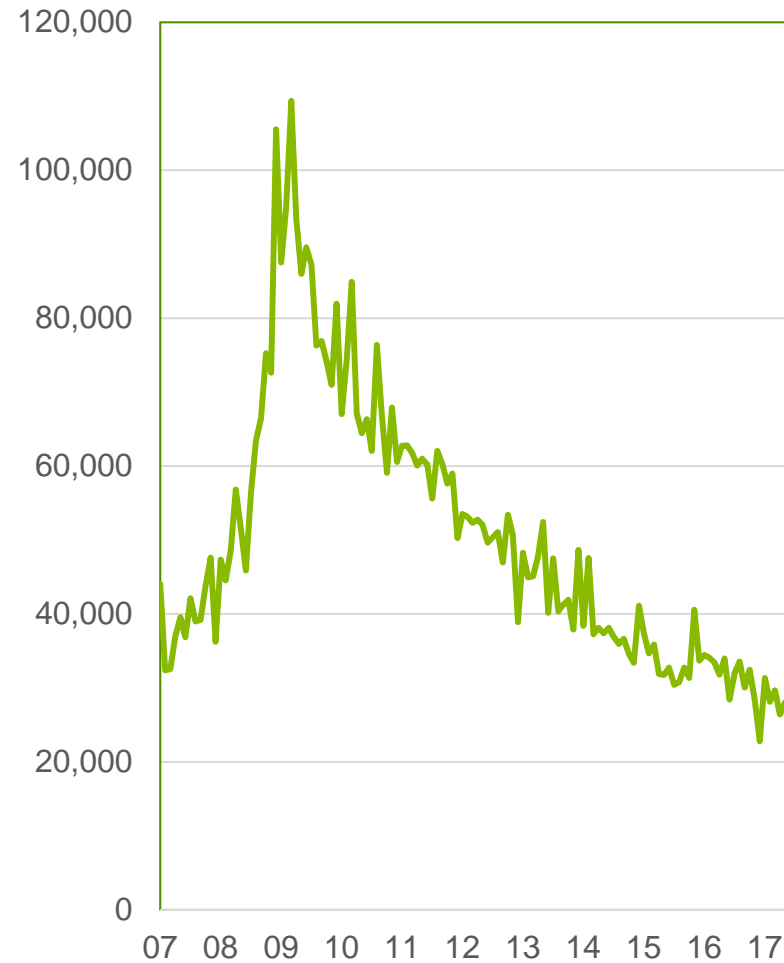
# Initial Claims For Unemployment Insurance

(monthly total, seasonally adjusted)

Florida



Georgia



Source: Bureau of Labor Statistics; Regions Economics Division

## Initial Claims For Unemployment Insurance (monthly total, seasonally adjusted)

Iowa



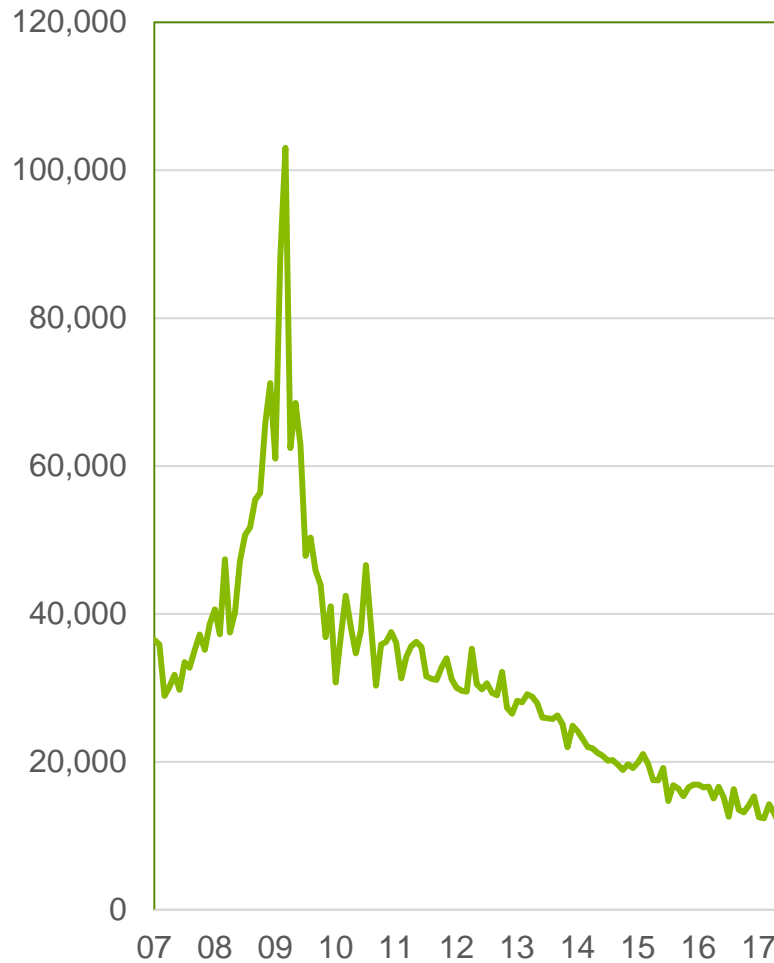
Illinois



Source: Bureau of Labor Statistics; Regions Economics Division

## Initial Claims For Unemployment Insurance (monthly total, seasonally adjusted)

Indiana



Kentucky



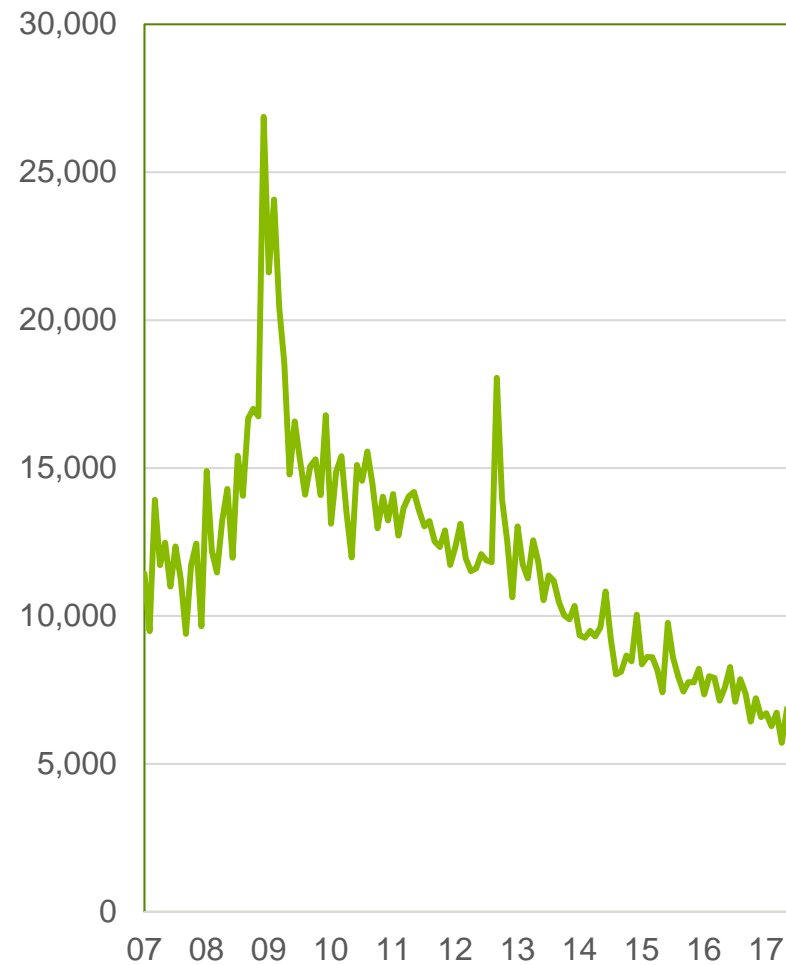
Source: Bureau of Labor Statistics; Regions Economics Division

## Initial Claims For Unemployment Insurance (monthly total, seasonally adjusted)

Louisiana



Mississippi



Source: Bureau of Labor Statistics; Regions Economics Division

## Initial Claims For Unemployment Insurance (monthly total, seasonally adjusted)

Missouri



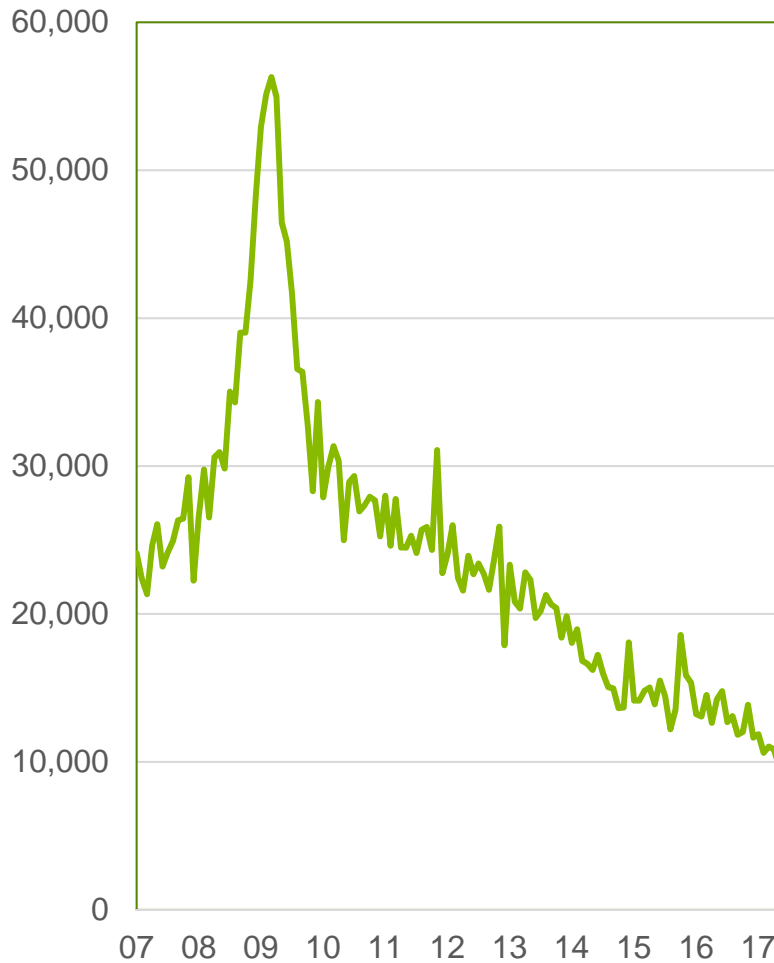
North Carolina



Source: Bureau of Labor Statistics; Regions Economics Division

# Initial Claims For Unemployment Insurance (monthly total, seasonally adjusted)

## South Carolina



## Tennessee



Source: Bureau of Labor Statistics; Regions Economics Division



# Initial Claims For Unemployment Insurance (monthly total, seasonally adjusted)

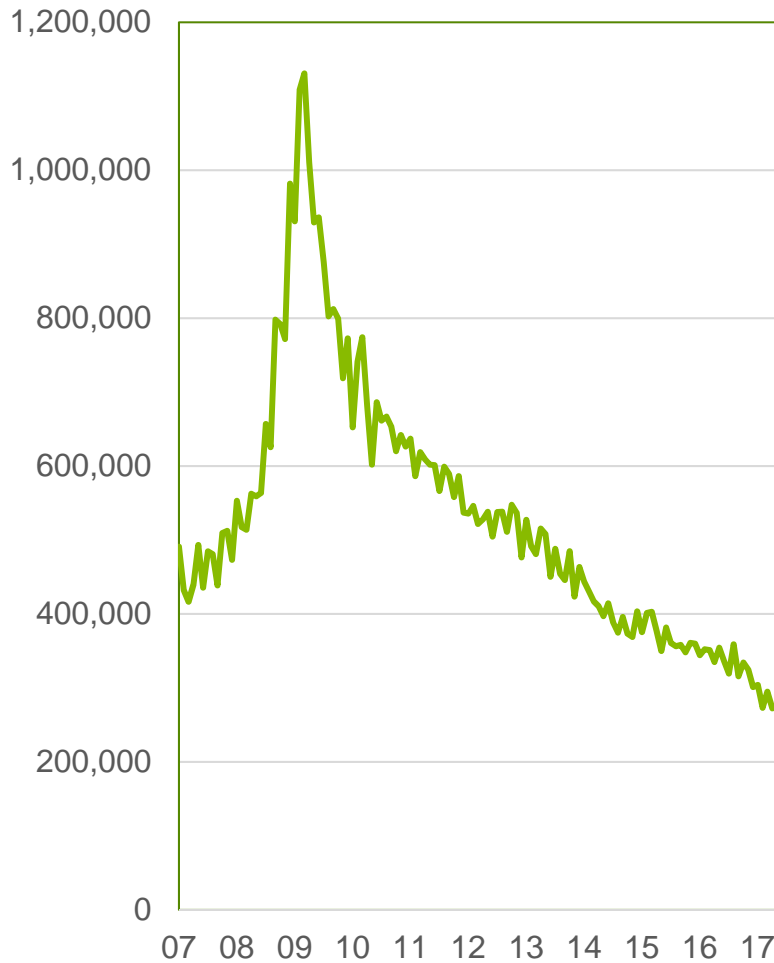
Texas



Source: Bureau of Labor Statistics; Regions Economics Division

# Initial Claims For Unemployment Insurance (monthly total, seasonally adjusted)

Regions Footprint



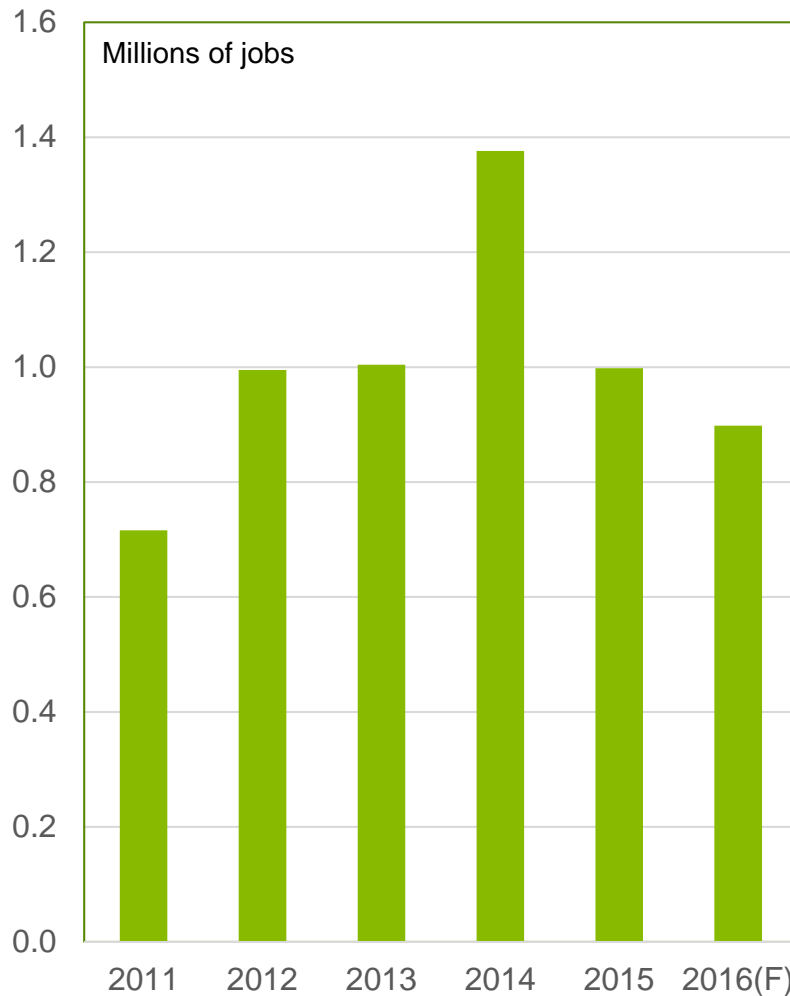
U.S.



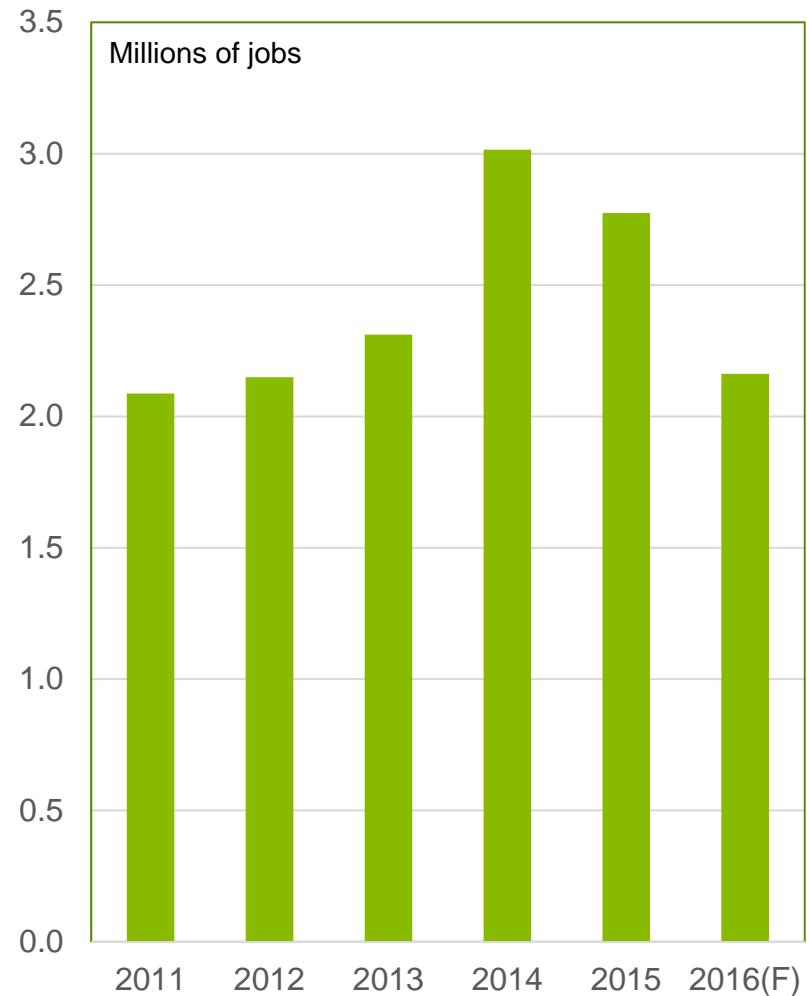
Source: Bureau of Labor Statistics; Regions Economics Division

## Annual Change In Total Nonfarm Employment

Regions Footprint



U.S.



Source: Bureau of Labor Statistics; Regions Economics Division